

# NORDIC STORIES

Isograd / Tectonic / Hidden Plains



Isograd



Tectonic



Hidden Plains



## Ontera™

A MILLIKEN COMPANY







**INSPIRED. INSPIRING.**

Our travels have taken us to extreme environments: the surreal contrasts of Iceland, a country powered by nature and made up of sulphurous plains, salt terraces and geothermal pools. This is geological drama at its best, a place where isolation and dark winters create the backdrop to a unique breed of creativity. In contrast the gentle landscape of Denmark. A country peppered with archipelagos and lush forests and home of 21<sup>st</sup> Century design, where form and function meet utopian ideology.



Isograd in Esker, monolithic tile installation



(top to bottom) Tectonic in Ash Blanket, Formwork 2.0 in Gable and Isograd in Esker, monolithic tile installation





Isograd and Tectonic Spiritland, monolithic tile installation



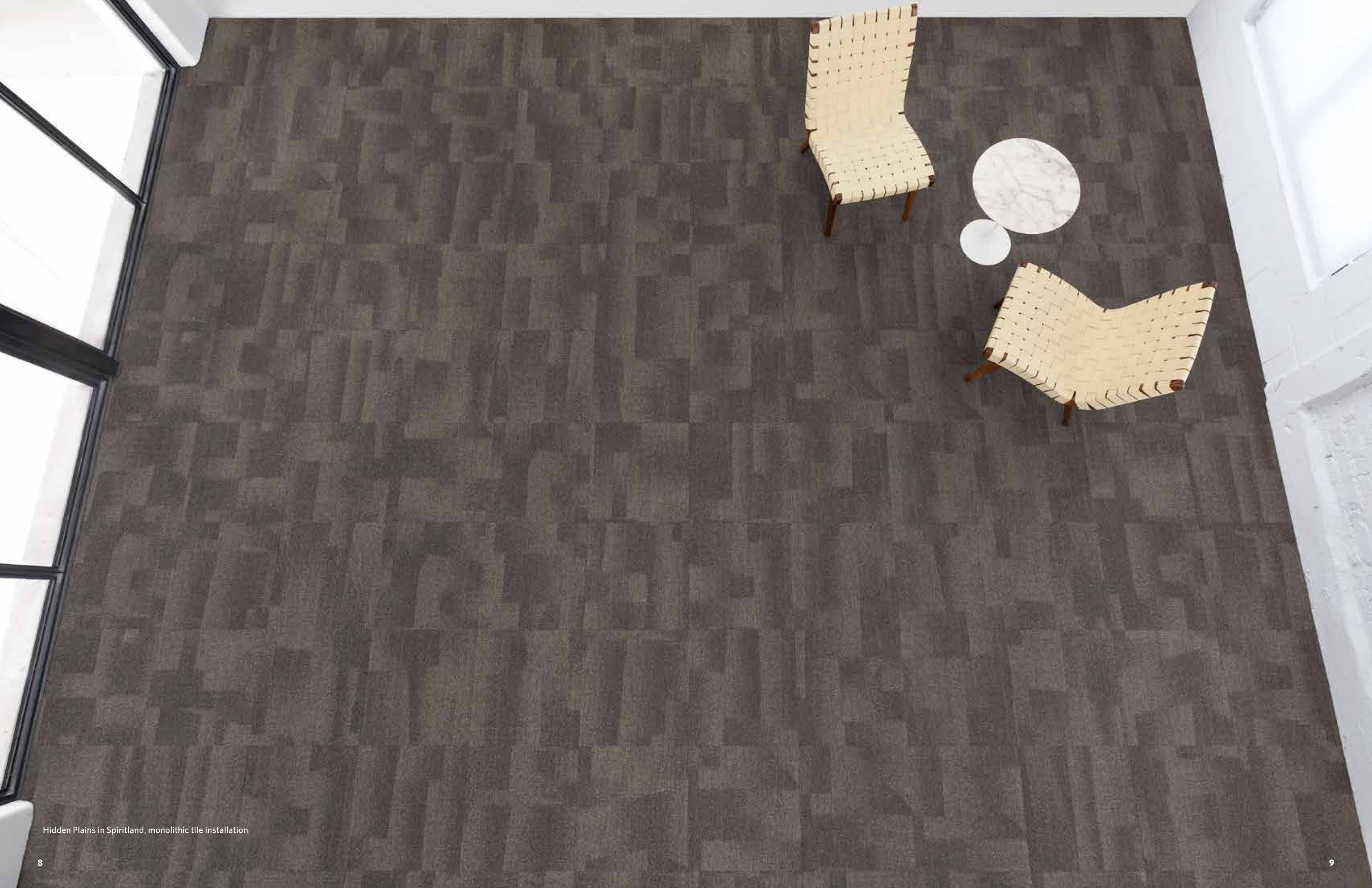


Tectonic in Ash Blanket, monolithic tile installation



Isograd in Flume, monolithic tile installation





Hidden Plains in Spiritland, monolithic tile installation





Hidden Plains in Lahar, monolithic tile installation



Tectonic in Lahar, monolithic tile installation



Isograd in Lahar, monolithic tile installation



COLOURLINE



IGD48-124 TWILIGHT



IGD121-145 SCHISTS



IGD124-94 SANDPIPER



IGD94-59 NORSE



TTC48-124 TWILIGHT



TTC121-145 SCHISTS



TTC124-94 SANDPIPER



TTC94-59 NORSE



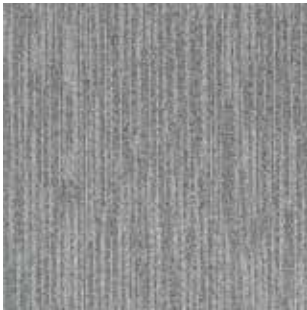
IGD120-178 ORES



IGD133-59 ALLUVIUM



IGD108-122 ESTUARY



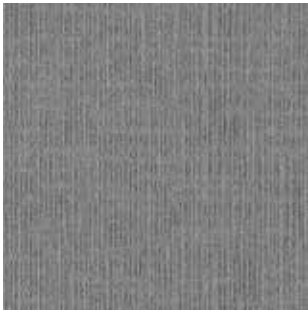
IGD180-138 SNOWMELT



TTC120-178 ORES



TTC133-59 ALLUVIUM



TTC108-122 ESTUARY



TTC180-138 SNOWMELT



IGD122-120 SPIRITLAND



IGD108-13 FJORD



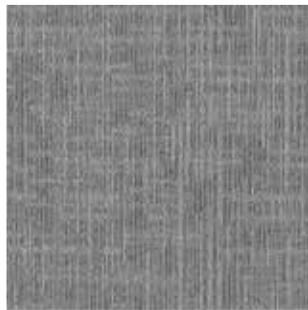
IGD133-120 FLUME



IGD67-59 LAHAR



TTC122-120 SPIRITLAND



TTC108-13 FJORD



TTC133-120 FLUME



TTC67-59 LAHAR



IGD6-108 AEOLIAN



IGD153-5 MINERAL



IGD13-119 ESKER



IGD157-178 ARCTIC OCEAN



TTC6-108 AEOLIAN



TTC153-5 MINERAL



TTC13-119 ESKER



TTC157-178 ARCTIC OCEAN



IGD119-27 ASH BLANKET



IGD19-27 KYANITE



TTC119-27 ASH BLANKET



TTC19-27 KYANITE



COLOURLINE



HDP48-124 TWILIGHT



HDP121-145 SCHISTS



HDP124-94 SANDPIPER



HDP94-59 NORSE



HDP120-178 ORES



HDP133-59 ALLUVIUM



HDP108-122 ESTUARY



HDP180-138 SNOWMELT



HDP122-120 SPIRITLAND



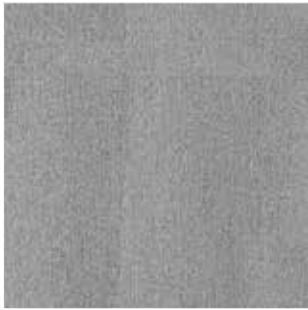
HDP108-13 FJORD



HDP133-120 FLUME



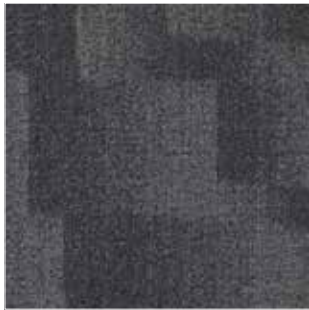
HDP67-59 LAHAR



HDP6-108 AEOLIAN



HDP153-5 MINERAL



HDP13-119 ESKER



HDP157-178 ARCTIC OCEAN



HDP119-27 ASH BLANKET



HDP19-27 KYANITE



Hidden Plains in Lahar, monolithic tile installation



# NORDIC STORIES

Isograd / Tectonic / Hidden Plains

## Construction

Tufted, Textured Loop

## Tile Size

50 cm x 50 cm (19.7" x 19.7")

## Yarn Type

100% Milliken Certified Nylon Type 6,6

## Dye Method

Solution Dyed

## Nominal Total Thickness

6.5MM Average

## Backing

PVC-Free B2™ Backing

## Texture Appearance Retention Rating (TARR)

Heavy Use

## Warranties

15 Year Wear Warranty

15 Year Anti-Static Warranty

15 Year Dimensional Stability Warranty

## Indoor Air Quality - CRI Green Label Plus™

GLP3200, Carpet Category 14X

## Recommended Installation Method



MONOLITHIC

This hard-back carpet tile product is covered by one or more patents, published applications and/or patents pending. Specifications are subject to normal manufacturing tolerances and may be changed without prior notice.



MEMBER



green building council australia  
MEMBER

**Ontera**  
A MILLIKEN COMPANY

Australia

Toll Free: 1800 668372

New Zealand

Toll Free: 0800 668372



**Growing greener for over 100 years.**

Visit [milliken.com](http://milliken.com) for more information